



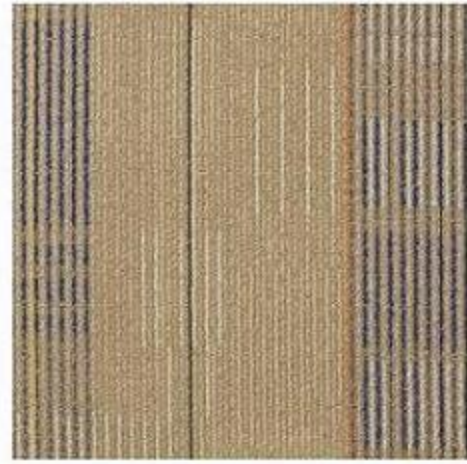
**ECO**  *soft*®

**TOGETHER WE CAN GROW**

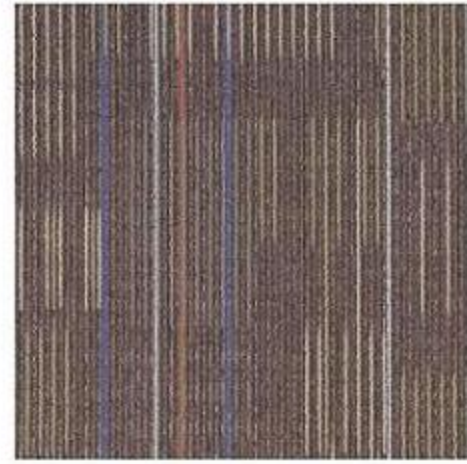
**AVENUE 2500  
RADIUS 2700  
S E R I E S**

C O M M E R C I A L C A R P E T

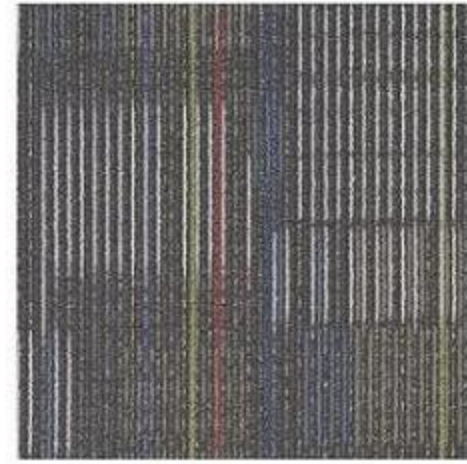
**AVENUE 2500** 100% NYLON 6



Ave 2503 Beige



Ave 2504 Wine



Ave 2506 Dark Grey



Ave 2509 Blue

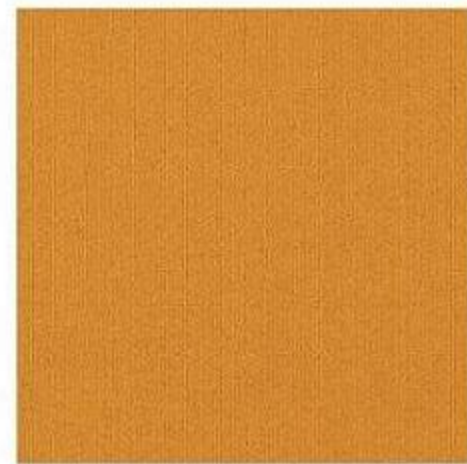
**RADIUS 2700** 100% NYLON 6



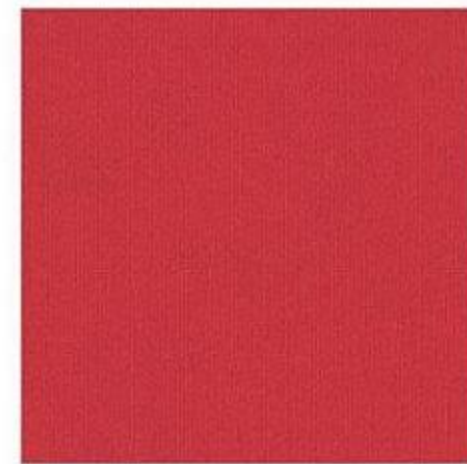
R 2703 Beige



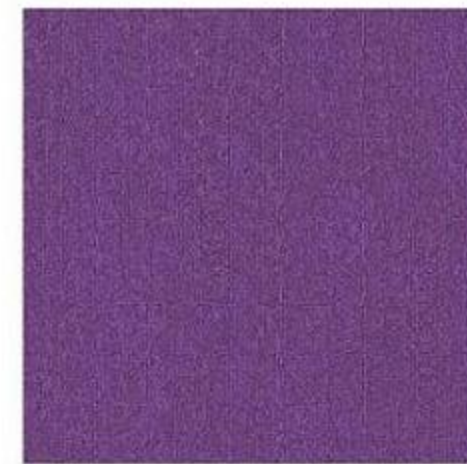
R 2712 Mustard



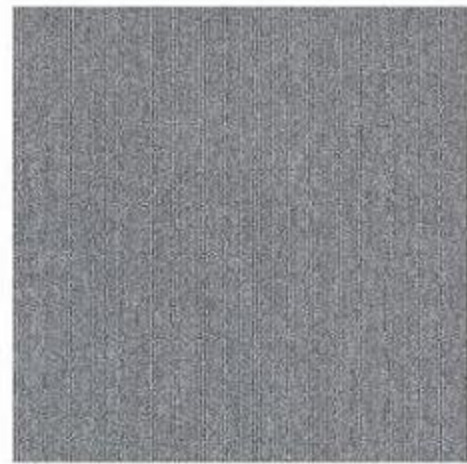
R 2718 Orange



R 2723 Red



R 2722 Purple



R 2706 L Grey



R 2705 Dark Grey



R 2701 Brown



R 2704 Black



R 2710 P Green



R 2707 Dark Blue



R 2709 Light Blue



R 2721 Royal Blue



R 2725 Lake Blue



R 2710 P Green+R 2701 Brown+R 2703 Beige



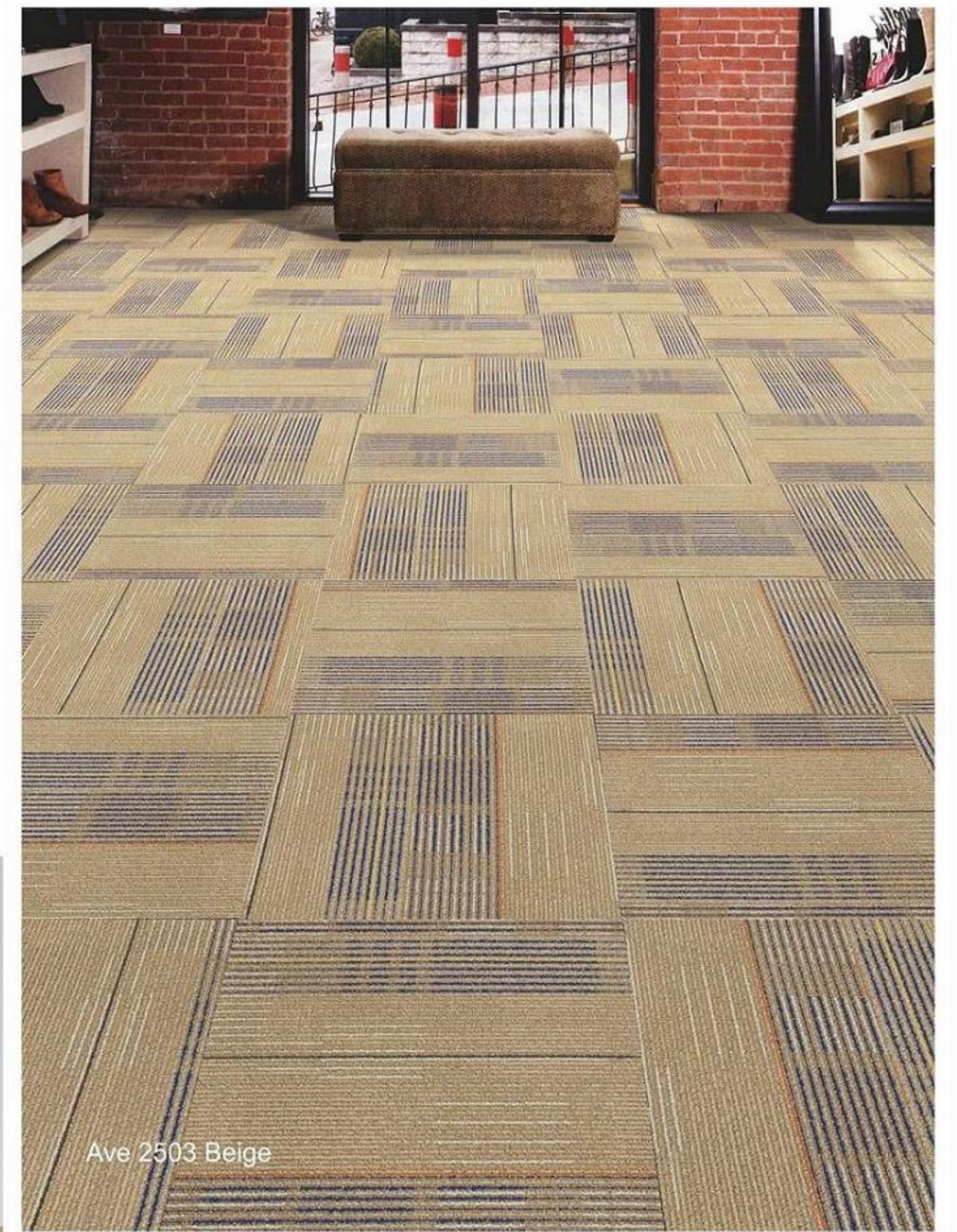
Ave 2504 Wine+R 2723 Red



Ave 2506 Dark Grey+R 2732 Purple+R 2721 Royal Blue



# COMMERCIAL CARPET



COMMERCIAL  
SPACE  
FANTASY



R 2718 Orange+R 2706 L Grey+R 2704 Black



R 2705 Dark Grey+R 2706 L Grey



R 2705 Dark Grey+R 2712 Mustard



R 2705 Dark Grey+R 2706 L Grey+R 2710 P Green

# LEISURE TIME



R 2721 Royal Blue+R 2704 Black+R 2709 Light Blue



R 2707 Dark Blue+R 2709 Light Blue+R 2721 Royal Blue+R 2703 Beige



## Technical Specification

|             |                            |                            |
|-------------|----------------------------|----------------------------|
| Style name  | Avenue 2500                | Radius 2700                |
| Construct   | Multi-Level Loop           | Level Loop                 |
| Guage       | 1/12                       | 1/10                       |
| Material    | 100% Solution Dyed NYLON 6 | 100% Solution Dyed NYLON 6 |
| Pile Weight | 500g/m <sup>2</sup> ±5%    | 460g/m <sup>2</sup> ±5%    |
| Pile Height | 3/4/5 mm                   | 3 mm                       |
| Packing     | 5sqm : 53.82 sqft/box      | 5sqm : 53.82 sqft/box      |
| Back        | PVC Backing                | PVC Backing                |
| The Size    | 50cm × 50cm                | 50cm × 50cm                |

### Test Performance

|                                       |   |
|---------------------------------------|---|
| Volatile Organic Compound (voc)       | :Pass ASTM D7706-11   |
| Semi Volatile Organic Compound (SVOC) | :Pass ASTM D7706-11   |
| Formaldehyde Emission                 | :Pass NIOSH method 2016   |
| Flammability                          | :Pass GB 8624-2006<br>Pass GB/T 14768-93                                    |
| Smoke Density                         | :Pass ASTM-E-662 < =450 DMC<br>Pass GB 8624-2006                            |
| Static Generation                     | :Pass AATCC-134<br>Pass GB/T 18044-2000                                     |
| Color fastness to water               | :Pass AATCC-16E<br>Pass Grade 4/5 ISO 105-X12<br>Pass BS EN ISO105 E01:1996 |
| Color fastness to light               | :Pass AATCC-16E<br>Pass Grade 5 ISO-B02:1994E<br>Pass BS EN ISO105 B02:1999 |
| Colorfastness to Crocking             | :Pass BS EN ISO 105-X12:2002  |
| Tensile strength test                 | :Pass ISO13934-1<br>Warp 3112.9   |

