



**DuPont™ Sorona®**  
renewably sourced fiber\*

# Carpet Revolution: GreenPad™

Made with DuPont™ Sorona® Renewable Sourced Fiber

SORONA®

LEED

Sorona® helps contribute to LEED points in at least 3 different areas:

LEED-NC (new construction), LEED CI (commercial interiors), LEED EB (existing buildings):

- IEQ Credit 4.3:
- Indoor Environmental Quality Credit 4: Low Emitting Material, 1 Point available
- MR Credit 5:
- Materials Credit 5: Local/Regional Materials, 1-2 Points available
- MR Credit 6:
- Materials Credit 6: Rapidly Renewable Materials, 1 Point available



**Green**<sup>pad</sup><sup>TM</sup>  
**DuPont™ Sorona®**  
renewably sourced fiber\*

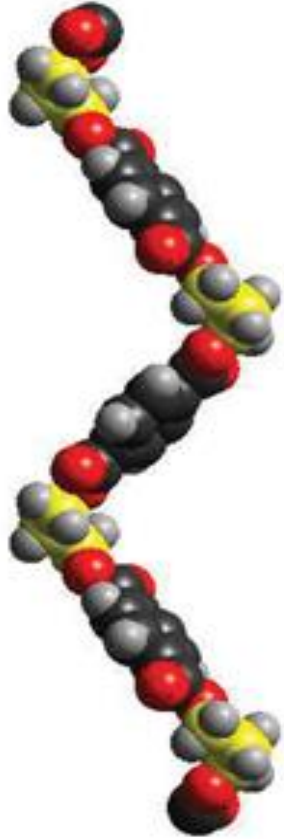
## Renewably sourced DuPont™ Sorona® offers environmental benefits

- ▶ Compared to Nylon 6 uses 30% less energy  
reduces greenhouse gas emissions by 63%
- ▶ Compared to Nylon 6,6 Sorona® production uses 40% less energy and reduces greenhouse gas emissions by 56%.

\*The environmental benefits of Sorona® are supported by peer-reviewed, third-party Life Cycle Analysis conducted according to ISO standards.



**DuPont™ Sorona®**  
renewably sourced fiber\*



Sorona®  
3GT™

# The King of All Fibers

## DuPont™ Sorona® Fiber

Greenpad™ made with DuPont™ Sorona® has a magic “**kick**” similar to a spring that makes the fiber more crush-resistant, resilient and durable.

## Great Performance

7 characteristics should be considered

- ▶ Durability
- ▶ Resiliency and crush resistance
- ▶ Stain resistance
- ▶ Bleach resistance
- ▶ Anti-Static
- ▶ UV resistance
- ▶ Faster drying



Occupants of built environments don't want simply to work, play, eat or sleep in a functional building. They want to be inspired, invigorated, comforted, and reassured by their surroundings. They want spaces that will make them more appropriate, comfortable. The economical Ecology architecture provides us with the opportunity to reach extremely low levels of energy consumption by employing high quality, cost-efficient measures to general building components-such measures are in turn of advantage to the health, ecology and economy sector.

Our design philosophy is driven from nature.

Mother nature gives us infinite inspiration. It is an appreciated source and reminder of great creation.

Ecology brings us a fresh aspect to see commercial spaces and offers an indoor energy changes.

“Bringing the Outside In”!





**DuPont™ Sorona®**  
renewably sourced fiber\*

Style Name: Provence

Construction: Multi-level Loop & Tip Shear

Fiber: DuPont™ Sorona® Fiber

Gauge: 1/12"

Stitches: 11 per inch

Pile Weight: 32 OZ/yd<sup>2</sup>

Average Pile Height: 5mm±0.5mm

Backing: Mix-Bac®

Tile size: 60cm \*60cm

Traffic Classification: Class II, Heavy Commercial

Static Propensity: ≤3.0kV (AATCC-134, GB/T18044-2000)

Flammability: Passes (ASTM E648, GB8624-2006)

Smoke Density: Passes (ASTM E662, GB/T8627-1999)

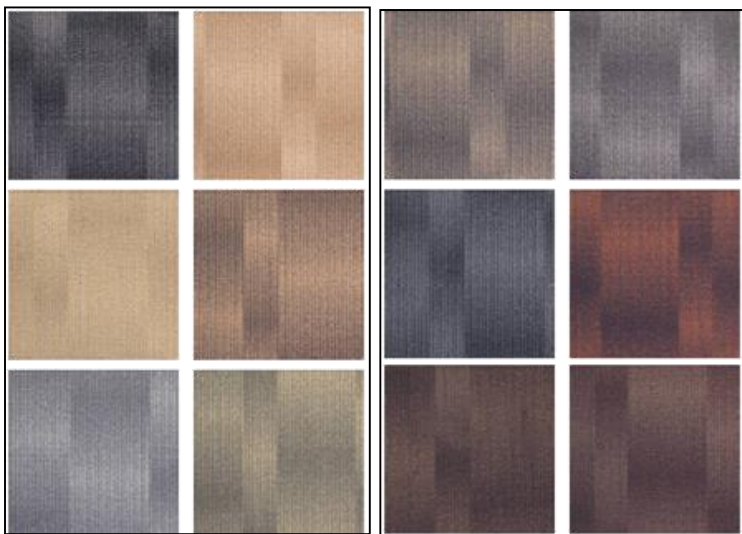




Style Name: Bordeaux  
Construction: Multi-level Loop & Tip Shear  
Fiber: DuPont™ Sorona® Fiber  
Gauge: 1/12”  
Stitches: 11 per inch  
Pile Weight: 29 OZ/yd<sup>2</sup>  
Average Pile Height: 5mm±0.5mm  
Backing: Mix-Bac®  
Tile size: 60cm \* 60cm  
Traffic Classification: Class II, Heavy Commercial  
Static Propensity: ≤3.0kV (AATCC-134, GB/T18044-2000)  
Flammability: Passes (ASTM E648, GB8624-2006)  
Smoke Density: Passes (ASTM E662, GB/T8627-1999)



DuPont™ Sorona®  
renewably sourced fiber\*



Style Name: Vitoria  
Construction: Multi-level Loop  
Fiber: DuPont™ Sorona®  
Gauge: 1/12"  
Stitches: 10 per inch  
Pile Weight: 21 OZ/yd<sup>2</sup>  
Average Pile Height: 4mm±0.5mm  
Backing: PVC with Fiberglass  
Tile size: 50cm \*50cm  
Traffic Classification: Class II, Heavy Commercial  
Static Propensity: ≤3.5kV (AATCC-134, GB/T18044-2008)  
Flammability: Passes (ASTM E648, GB8624-2006)  
Smoke Density: Passes (ASTM E662, GB/T8627-1999)



**DuPont™ Sorona®**  
renewably sourced fiber\*

Style Name: Saipan Island  
Construction: Multi-level Loop  
Fiber: DuPont™ Sorona® Fiber  
Gauge: 1/12”  
Stitches: 11 per inch  
Average Pile Height: 4mm±0.5mm  
Backing: PVC with Fiberglass  
Tile size: 50cm \*50cm  
Traffic Classification: Class III, Extra Heavy Commercial  
Static Propensity: ≤3.5kV (AATCC-134, GB/T18044-2008)  
Flammability: Passes (ASTM E648, GB8624-2006)  
Smoke Density: Passes (ASTM E662, GB/T8627-1999)





**DuPont™ Sorona®**  
renewably sourced fiber\*

Style Name: Loire  
Construction: Multi-level Loop  
Fiber: DuPont™ Sorona® Fiber  
Gauge: 1/12”  
Stitches: 10 per inch  
Average Pile Height: 4mm±0.5mm  
Backing: PVC with Fiberglass  
Tile size: 50cm \*50cm  
Traffic Classification: Class II, Heavy Commercial  
Anti-microbial: Ultra-Fresh (Available)  
Static Propensity: ≤3.5kV (AATCC-134, GB/T18044-2008)  
Flammability: Passes (ASTM E648, GB8624-2006)  
Smoke Density: Passes (ASTM E662, GB/T8627-1999)





**DuPont™ Sorona®**  
renewably sourced fiber\*

Style Name: Bali  
Construction: Multi-level Loop & Tip Shear  
Fiber: DuPont™ Sorona® Fiber  
Gauge: 1/12"  
Stitches: 10 per inch  
Pile Weight: 22 OZ/yd<sup>2</sup>  
Average Pile Height: 4mm±0.5mm  
Backing: PVC with Fiberglass  
Tile size: 50cm \*50cm  
Traffic Classification: Class II, Heavy Commercial  
Static Propensity: ≤3.5kV (AATCC-134, GB/T18044-2008)  
Flammability: Passes (ASTM E648, GB8624-2006)  
Smoke Density: Passes (ASTM E662, GB/T8627-1999)



# Forest Collection



Style Name: Forest Collection  
 Construction: Multi-level Loop & Tip Shear  
 Fiber: DuPont™ Sorona® Fiber  
 Gauge: 1/12”  
 Stitches: 11 per inch  
 Pile Weight: 29/30 OZ/yd<sup>2</sup>  
 Average Pile Height: 5mm±0.5mm  
 Backing: PVC®  
 Tile size: 50cm \* 50cm  
 Traffic Classification: Class II, Heavy Commercial  
 Static Propensity: ≤3.0kV (AATCC-134, GB/T18044-2000)  
 Flammability: Passes (ASTM E648, GB8624-2006)  
 Smoke Density: Passes (ASTM E662, GB/T8627-1999)

# Forest collection: Caddo Lake

**Green** <sup>pad</sup>™  
**DuPont™ Sorona®**  
renewably sourced fiber\*



*Caddo Lake 01*



# Forest collection : Daintree

pad  
Green™

DuPont™ Sorona®  
renewably sourced fiber\*



*Daintree 01*



*Daintree 01, 06*



# Forest collection: *Schwarzwald*<sup>™</sup>



DuPont<sup>™</sup> Sorona<sup>®</sup>  
renewably sourced fiber\*



*Schwarzwald 02*



*Schwarzwald 02 08*

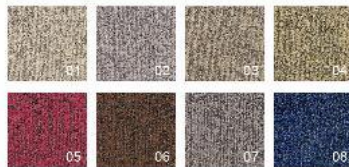
# Forest collection: Crooked

Forest



DuPont™ Sorona®  
renewably sourced fiber\*

*Crooked Forest 07*



# Forest collection : Waipao



DuPont™ Sorona®  
renewably sourced fiber\*



*Waipao Forest 02*



*Waipao Forest 02, 07*





DuPont™ Sorona®  
renewably sourced fiber\*

# Gold Coast



## Specifications:

Style name: Gold Coast

Construction: Multi-level loop

Fiber: DuPont Sorona Fiber

Gauge: 1/12"

Stitches: 10 per inch

Pile Weight: 21oz/yd<sup>2</sup>

Average Pile Height: 4mm+-  
0.5mm

Backing: PVC with fiberglass

Tile Size: 25cm\*100cm

# Performance Certificates

CRI Green Label Plus Certification

Dimensional Stability

Static Propensity

Colorfastness to Crocking

Stain Resistance

Colorfastness to Bleach

Hexapod Drum

Resistance to Soiling

Radiant Panel

Smoke Density

UV Resistance

Castor Chair

Fire Test

Color Fastness to Light, Water and Rubbling

Static Electrical Propensity



**DuPont™ Sorona®**  
renewably sourced fiber\*