



RSG™  
CONTRACT

# MIRAGE



I must go down to the seas again, to the lonely sea and the sky,  
And all I ask is a tall ship and a star to steer her by,  
And the wheel's kick and the wind's song and the white sail's shaking,  
And a gray mist on the sea's face, and a gray dawn breaking.



Anything one man can imagine, other men can make real.

Jules Verne



12601, 12601A, 12602A, 12608, 12608A, 12607&12607A



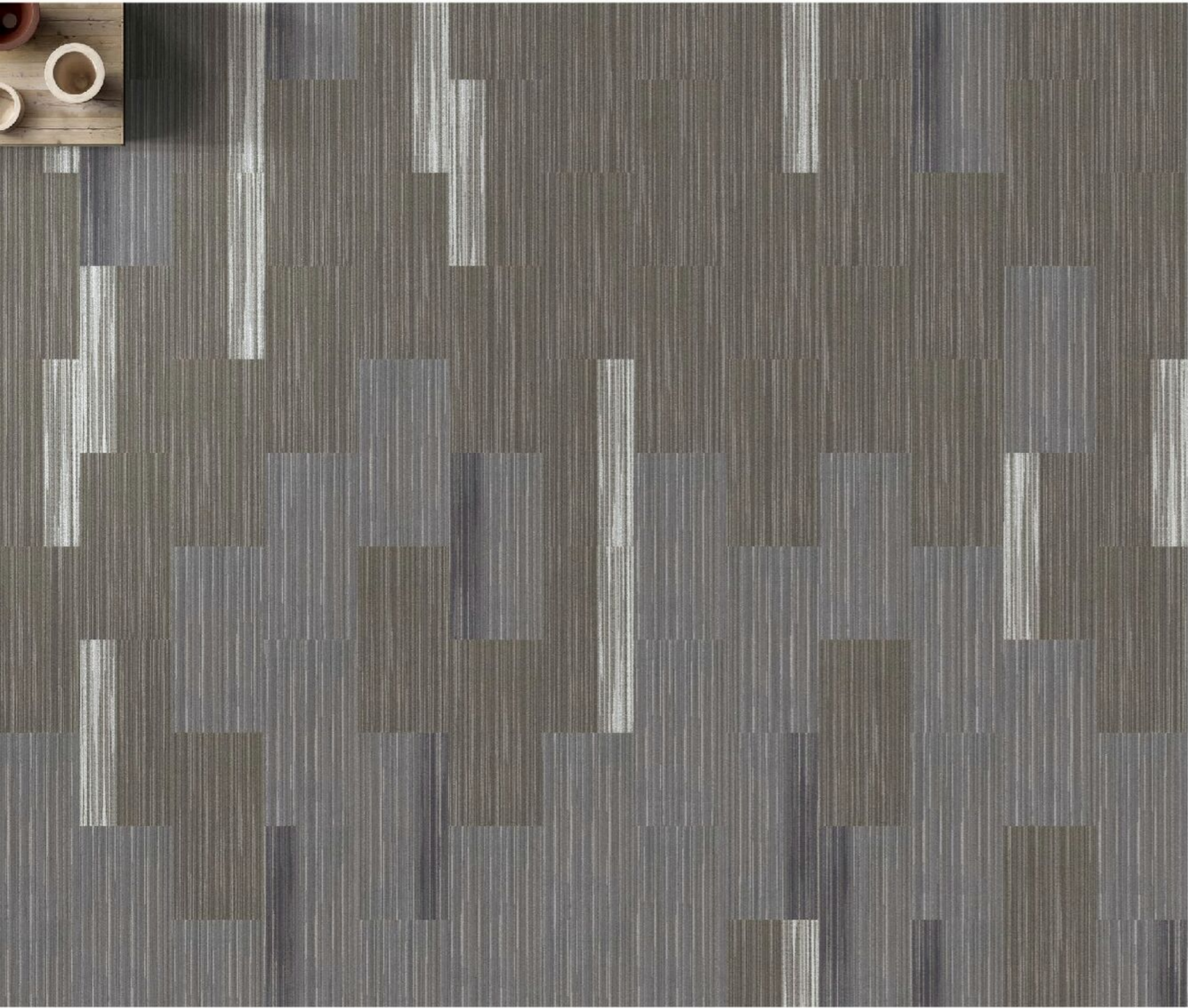
126021,2602A,12602B,12606 & 12606B



12603 & 12603A

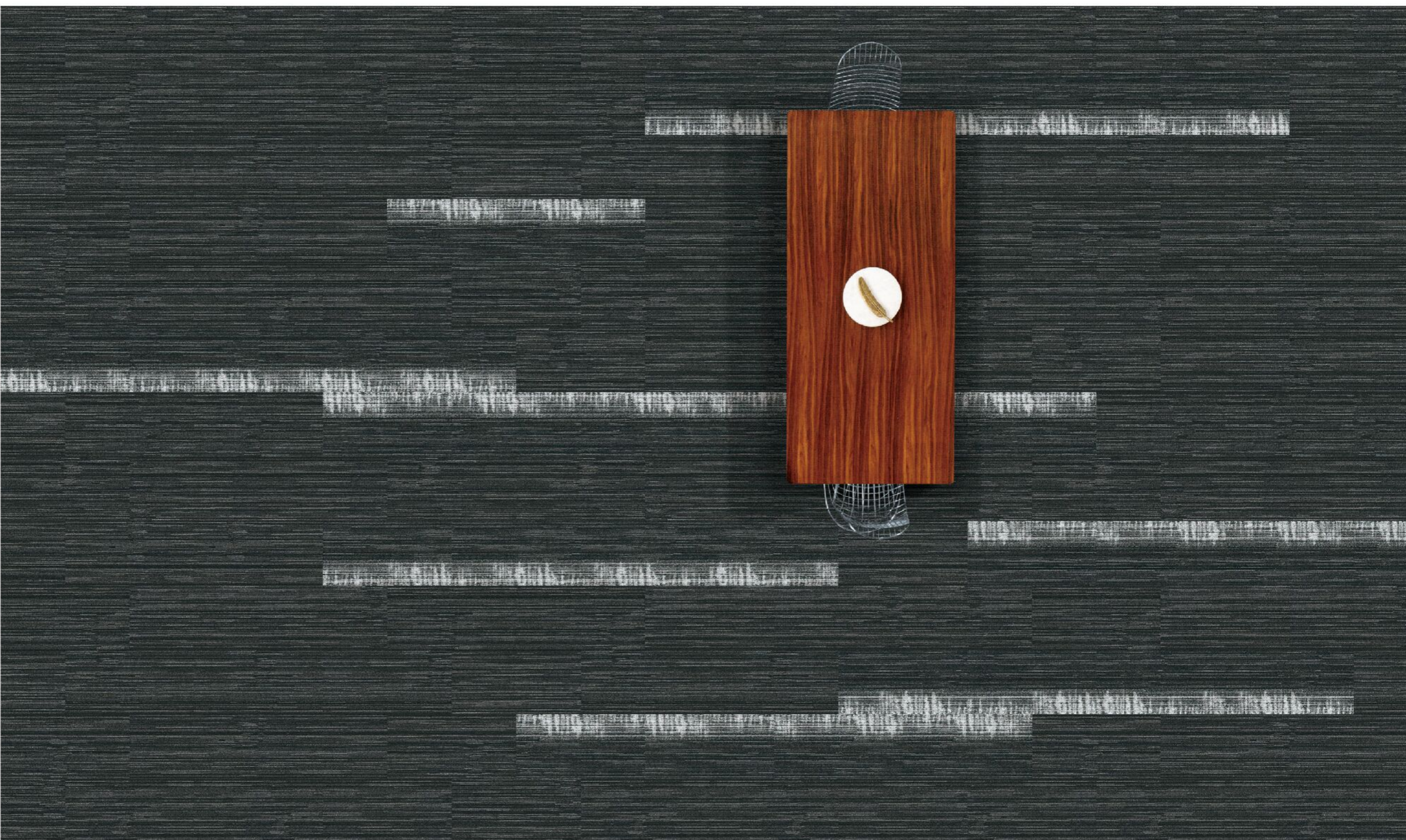


12606, 12606A, 12606B&12606C



12605,12605A,12610&12610A





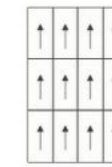
12608 & 12608B



12607, 12607B, 12608 & 12608B

# MIRAGE

**Product Name:** Mirage  
**Construction:** Multi-Level Loop  
**Material:** 100% Nylon 6  
**Color System:** 100% Solution Dyed  
**Machine Gauge:** 1/12"  
**Pile Weight:** 700 g/m<sup>2</sup>  
**Pile Height:** 3-5.5 mm  
**Tile Size:** 18x36"  
**Backing Structure:** PVC with fiberglass



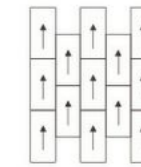
Monolithic



Herringbone



Brick



Ashlar

**Volatile Organic Compound(voc):** Pass ASTM D7706-11  
**Semi Volatile Organic Compound(svoc):** Pass ASTM D7706-11  
**Formaldehyde Emission:** Pass NIOSH method 2016  
**Flammability:** Pass GB 8624-2006  
 Pass GB/T 14768-93  
**Smoke Density:** Pass ASTM-E-662 < =450 DMC  
 Pass GB/T 8624-2006  
**Static Generation:** Pass AATCC-134  
**Antimicrobial:** Pass GB/T 18044-2000  
**Color Fastness To Water:** Pass AATCC TM 174  
**Color Fastness To Light:** Pass AATCC-16E  
 Pass Grade 4/5 ISO 105-X12  
**Color Fastness To Crocking:** Pass AATCC-16E  
 Pass Grade 5 ISO-B02:1994E  
**Tensile Strength Test:** Pass AATCC-165  
 Pass ISO13934-1  
 Warp 3112.9

## DID YOU KNOW?

RSG Contract Modular using only premium Nylon 6 or Nylon 6,6. This features being enhanced with DGENESIS™ soil protection.

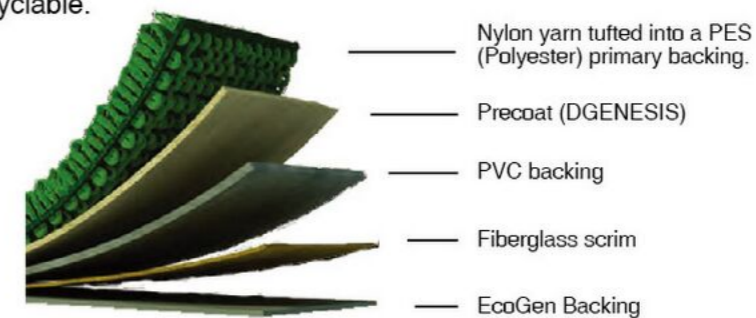
### ECOGEN™ Backing

Standard for all RS Global modular product designs.

100% Recyclable.

### Why Opt for Nylon?

- Strength and Elasticity
- Resistant to Mold, Mildew and Sun Damage
- Spill and Stain Resistant
- Easy Cleaning



12602B&12608B



12601



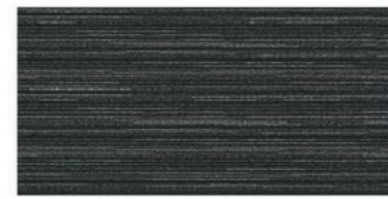
12602



12603



12607



12608



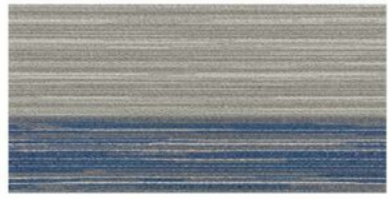
12609



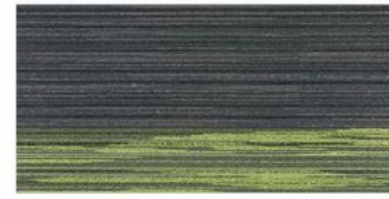
12601A



12602A



12603A



12607A



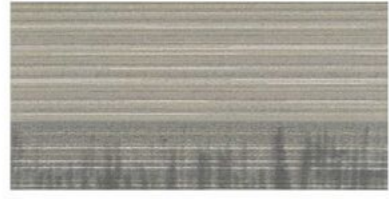
12608A



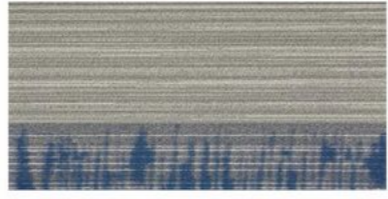
12609A



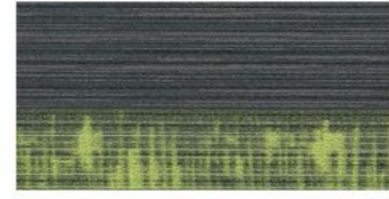
12601B



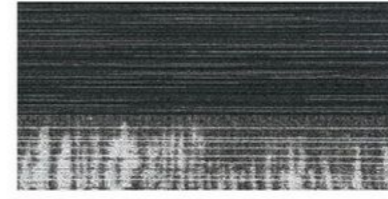
12602B



12603B



12607B



12608B



12609B



12601C



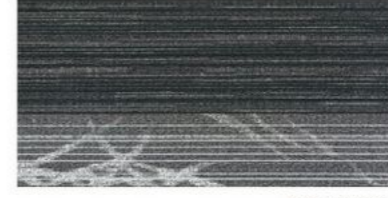
12602C



12603C



12607C



12608C



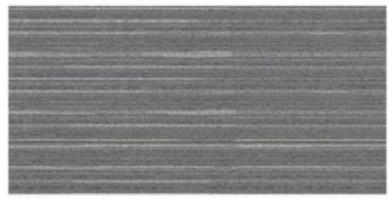
12609C



12604



12605



12606



12610



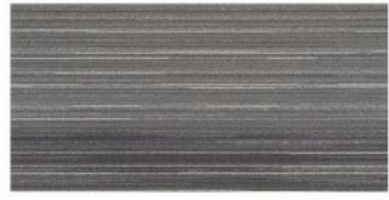
12611



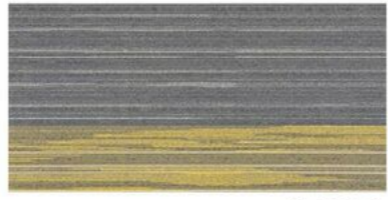
12612



12604A



12605A



12606A



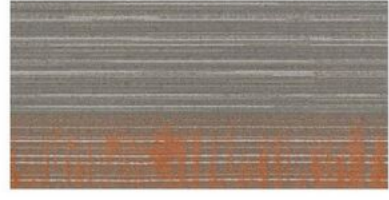
12610A



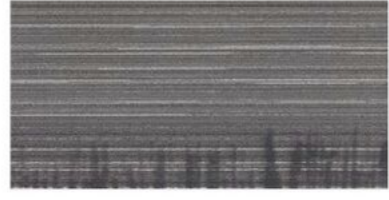
12611A



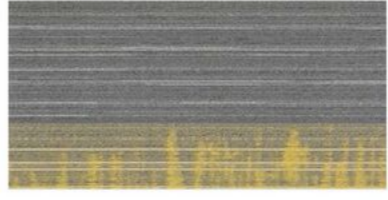
12612A



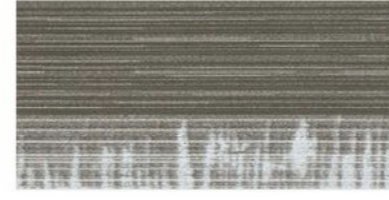
12604B



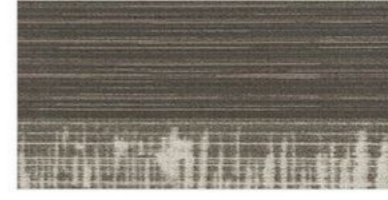
12605B



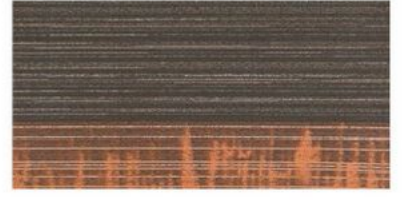
12606B



12610B



12611B



12612B



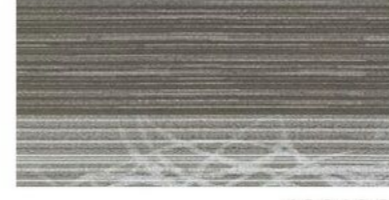
12604C



12605C



12606C



12610C



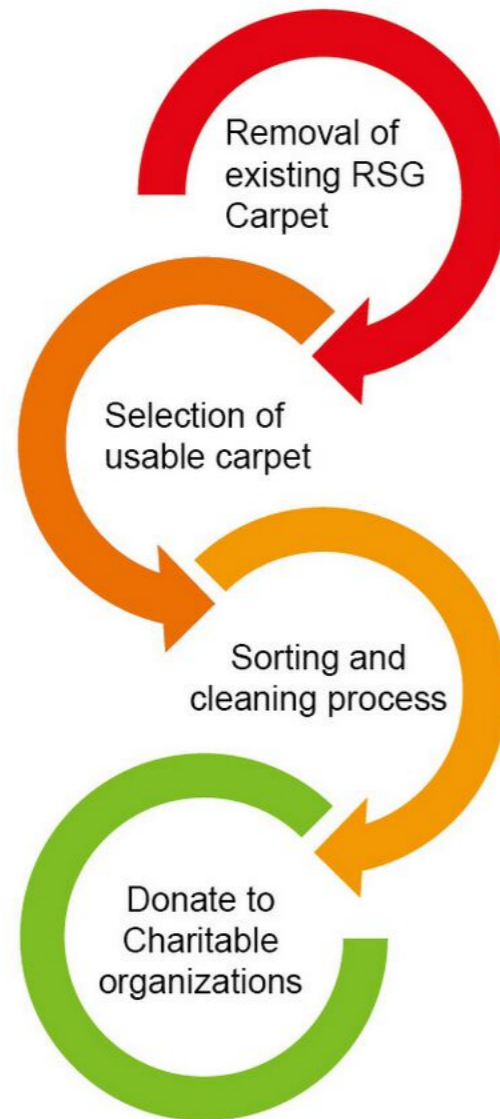
12611C



12612C

# GiveBack™

RSG works hand-in-hand with our respected client by refurbishing their current interior with new products while we collect the unwanted carpets. The unwanted carpets will be put through a filter and cleaning process, and the cleaned carpets will then be contributed back to the society, for example, underprivileged children's home, old folks home, and other charitable organizations.



How does GiveBack™ program benefit? Disposed carpet most likely end up in landfills or incineration plants in most countries where recycling plant for carpet is unavailable. GiveBack™ program helps in reducing the waste going to landfills and incineration plants thus helps in preserving the environment and reduces carbon footprint.

## PAVE THE WAY FOR A SUSTAINABLE FUTURE

RSG Contract engaged in sustainability as we design and manufacture floor globally. Deeply embedded in our vision, we incorporated eco-design into each step of its production process and meets the requirements of various environmental labels. It is to develop innovative flooring solutions for better living spaces. With that in mind, we **hope to create something valuable for our customers and enhance their wellbeing**, whilst respecting the environment.



### CRI Green Label Plus

Green Label Plus is an independent testing program that identifies carpet, adhesives, and cushion with very low emissions of VOCs to help improve indoor air quality. It is an outgrowth of, and enhancement to the CRI Green Label Testing program.

### SIRIM Eco-Label

The SIRIM Eco-Labeling Scheme is a National testing program of Malaysia that identifies any products with low emissions of VOCs and formaldehyde to help improve indoor air quality. This program is tested under SIRIM QAS International, which is a member of the **Global Ecolabelling Network (GEN)**. GEN is a non-profit international association of third-party, environmental performance labelling organizations. SIRIM QAS International's membership in GEN attests to the credibility of SIRIM Eco-labeling Scheme and puts it at par with the eco-labeling schemes of other member countries.



### KATRI Eco-Label

KATRI known as Korea Apparel Testing & Research Institute provides consumer products testing and inspection service to major manufacturers and retailers. While KATRI Eco-Label is a program that identifies products with low emissions of VOCs

### CE Marking

The letters 'CE' appear on many products traded on the extended Single Market in the European Economic Area (EEA). They signify that products sold in the EEA have been assessed to meet high safety, health, and environmental protection requirements. CE marking also supports fair competition by holding all companies accountable to the same rules. By affixing the CE marking to a product, a manufacturer declares that the product meets all the legal requirements for CE marking and can be sold throughout the EEA. This also applies to products made in other countries that are sold in the EEA.

