

RSG[®]
CONTRACT

BUBBLE

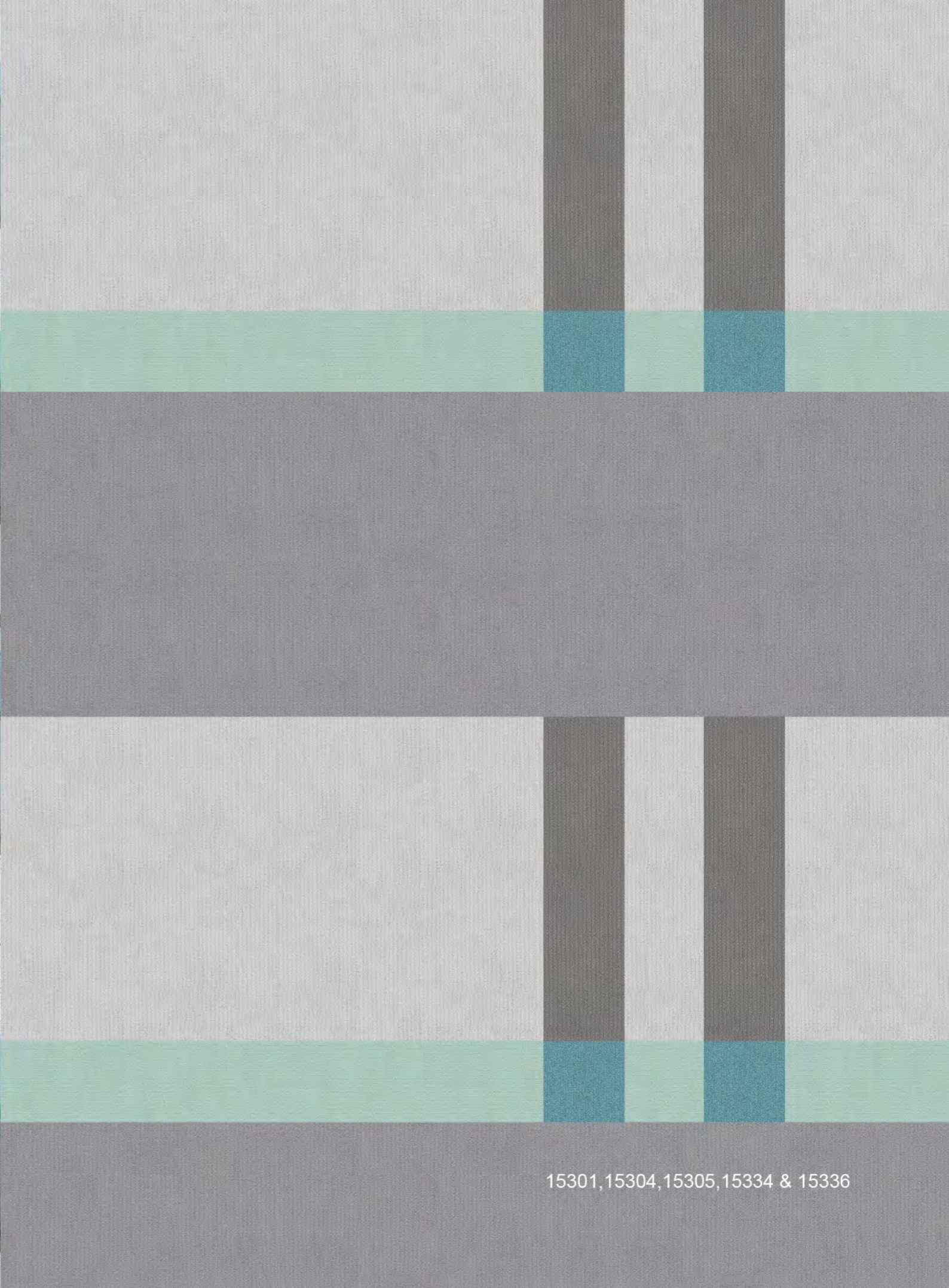


Bubble is like a colorful palette,
which can depict beautiful patterns at any time.



I'll paint you a rainbow with colors of smiles,
That glow with sincerity over the miles.
On a palette of words I will tenderly blend,
Tones into treasures of sunlight and wind.





15301,15304,15305,15334 & 15336



15302, 15307, 15309, 15310 & 15311



15301, 15302, 15305, 15307 & 15308

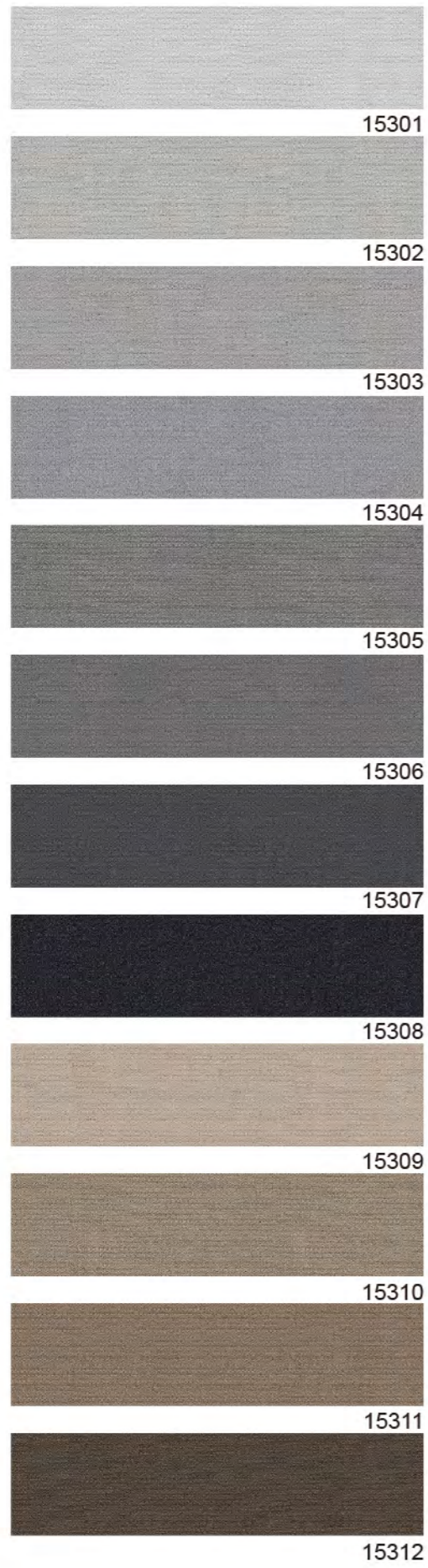


15303, 15305, 15307 & 15320





15305, 15307, 15308 & 15323

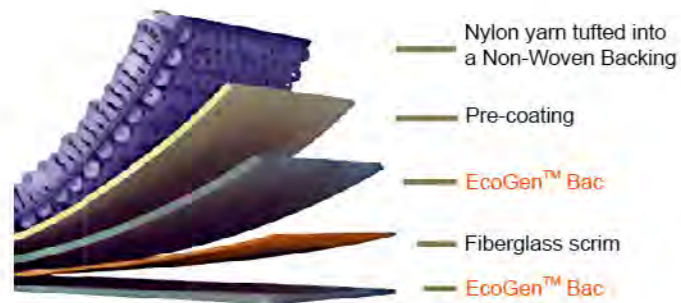


BUBBLE

| | |
|-------------------|--------------------------|
| Product Name | : Bubble 15300 |
| Construction | : Multi-level Loop |
| Yarn / Fiber | : 100% Universal Nylon 6 |
| Color System | : 100% Solution Dyed |
| Machine Gauge | : 1 / 12 " |
| Pile Weight | : 550 g/m ² |
| Pile Height | : 3.0 ~ 5.5 mm |
| Size Description | : 25 x 100 cm |
| Backing Structure | : PVC with fiberglass |

Generic Tests

| | |
|---|--|
| Dynamic Loading Pass ISO 2094 Pass AS/NZS 2111.2 | Green Carpet(VOC) Pass ISO 10580 Pass ASTM D7706-11 |
| Static Loading Pass ISO 015/3415 Pass AS/NZS 2111.13 | Green Carpet (Formaldehyde) Pass NIOSH Method 2016 |
| Thermal Resistance Pass ASTM C518 R | Static Generation Pass AATCC 134 |



EcoGen™ BAC

A minimum of 35% overall recycled content.

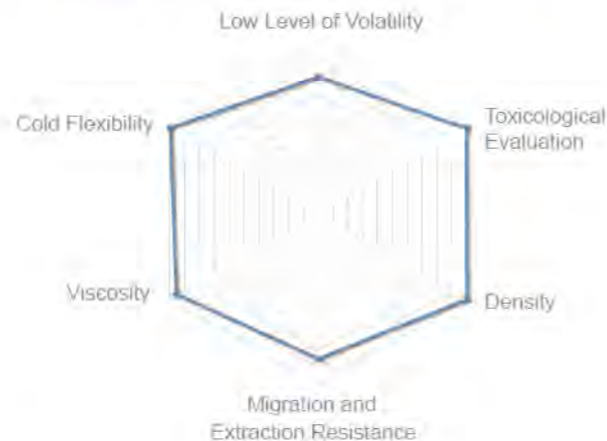
Standard for all RSG Contact Modular product designs. And we only use Hexamoll DINCH as plasticizers.

Performance Specifications

| | |
|--|--|
| Stability - Delaminating Pass ISO 2551 Pass AS/NZS 2111.16 Pass ASTM D3936 | Colour Fastness - Light Pass AS 2001 Pass ISO 105-B02 Pass AATCC 16E |
| Stability - Dimensional Pass ISO 2551 Pass ISO/PAS 17984 | Colour Fastness - Rubbing and Crocking Pass ISO 105-X12 Pass AS/NZS 2111.19.1 Pass AATCC 165 |
| Stability - Tuft Bind Pass ASTM D1335 Pass ISO 4919 Pass AS/NZS 2111.15 | Colour Fastness - Water Pass AS 2001.4.21 Pass ISO 105-E01 Pass AATCC 107 |
| Flammability - Methanamine Pill Pass BS 6307 Pass ISO 6925 | Wear - Castor Chair Pass BS-EN 985 Pass ISO 4918 |
| Flammability - Radiant Panel Pass ISO 9239-1 Pass ASTM E648 | Wear - Vetterman Drum Pass BS ISO 10361 |
| Flammability - Smoke Density Pass ISO 9239-1 Pass ASTM E662 | Sound Absorption Pass ISO 354 |
| Antistatic Pass BS ISO 6356 Pass AATCC 134 | Impact Sound Pass ISO 10140-3 |
| | Antimicrobial Treatment Pass ASTM E2471 Pass AATCC 174 Pass AATCC 171 |

Hexamoll DINCH

- Ideal solution for non-phthalate plasticizers.
- Especially designed for applications with close human contacts.
- Used extensively for medical, food contact & toys application.



PAVE THE WAY FOR A SUSTAINABLE FUTURE

RSG Contract engaged in sustainability as we design and manufacture floor globally. Deeply embedded in our vision, we incorporated eco-design into each step of its production process and meets the requirements of various environmental labels. It is to develop innovative flooring solutions for better living spaces. With that in mind, we hope to create something valuable for our customers and enhance their wellbeing, whilst respecting the environment.



CRI Green Label Plus

Green Label Plus is an independent testing program that identifies carpet, adhesives, and cushion with very low emissions of VOCs to help improve indoor air quality. It is an outgrowth of, and enhancement to the CRI Green Label Testing program.

SIRIM Eco-Label

The SIRIM Eco-Labeling Scheme is a National testing program of Malaysia that identifies any products with low emissions of VOCs and formaldehyde to help improve indoor air quality. This program is tested under SIRIM QAS International, which is a member of the Global Ecolabelling Network (GEN). GEN is a non-profit international association of third-party, environmental performance labelling organizations. SIRIM QAS International's membership in GEN attests to the credibility of SIRIM Eco-labelling Scheme and puts it at par with the eco-labelling schemes of other member countries.



KATRI Eco-Label

KATRI known as Korea Apparel Testing & Research Institute provides consumer products testing and inspection service to major manufacturers and retailers. While KATRI Eco-Label is a program that identifies products with low emissions of VOCs.

CE Marking

The letters 'CE' appear on many products traded on the extended Single Market in the European Economic Area (EEA). They signify that products sold in the EEA have been assessed to meet high safety, health, and environmental protection requirements. CE marking also supports fair competition by holding all companies accountable to the same rules. By affixing the CE marking to a product, a manufacturer declares that the product meets all the legal requirements for CE marking and can be sold throughout the EEA. This also applies to products made in other countries that are sold in the EEA.

