

A person with a backpack and camera is walking through a cave. The ceiling of the cave is covered in a glowing, wavy, blue-green texture that resembles water or a liquid surface. The person is walking on a rocky path, and the overall atmosphere is mysterious and ethereal.

RSG[®]
CONTRACT

TEXTURE





87301A+01B+01C+01D

To Provide You
With A Healthy And Green
Environment



87302A+02B+02C+02D



87303A+03B+03C+03D



Estate management

day day

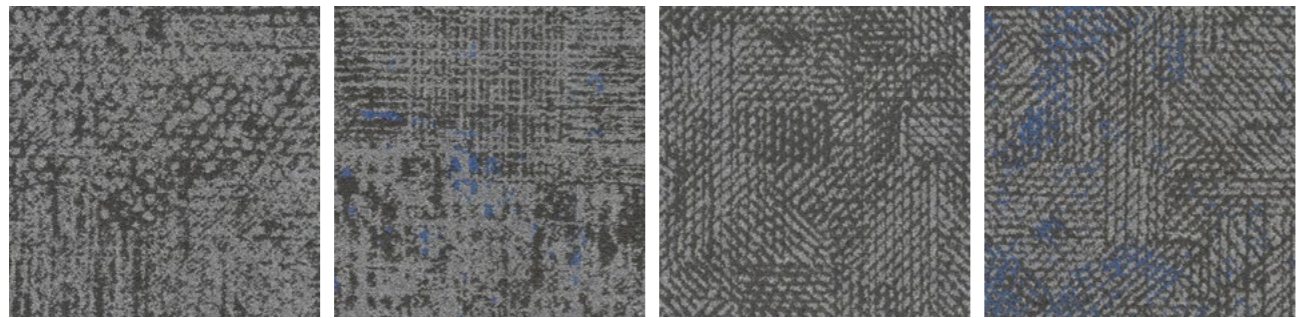
87304A+04B+04C+04D



$$\iint_{\Omega} \frac{dx dy dz}{\sqrt{x^2+y^2+(z-2)^2}} = ?$$
$$= \int_0^{2\pi} \int_0^{\pi} \sin \varphi d\varphi \int_0^2 \frac{z^2 dz}{\sqrt{x^2+y^2+z^2-4z+4}}$$
$$= \int_0^{2\pi} \int_0^{\pi} \sin \varphi d\varphi \int_0^2 \frac{z^2 dz}{\sqrt{z^2-4z\cos\varphi+4}}$$
$$= 2\pi \int_0^{\pi} z^2 dz \int_0^{\pi} \frac{d(-\cos\varphi)}{\sqrt{z^2-4z\cos\varphi+4}}$$
$$= 2\pi \int_0^{\pi} z^2 dz \int_0^{\pi} \frac{d(1+z\cos\varphi)}{\sqrt{z^2-4z\cos\varphi+4}}$$
$$\Omega = x^2+y^2+z^2 \leq 4$$
$$\begin{cases} x = 2 \\ y = 2 \\ z = 2 \end{cases}$$
$$dx dy dz$$



87305B+05D

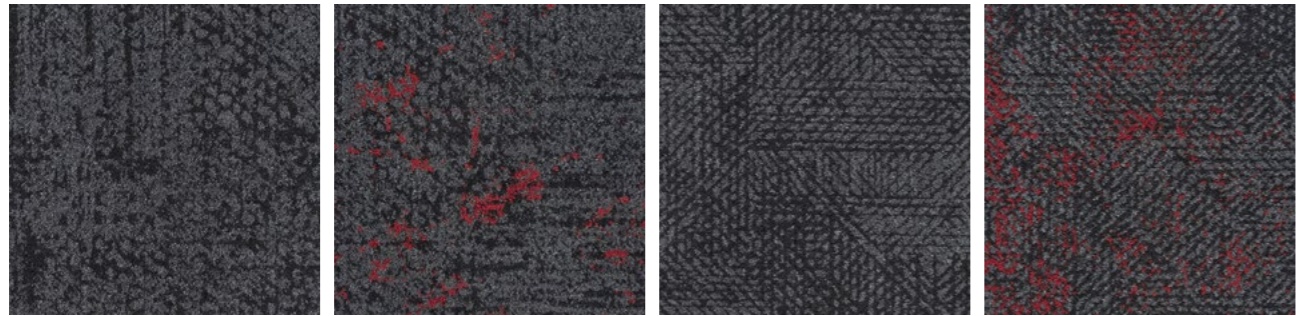


87301A

87301B

87301C

87301D

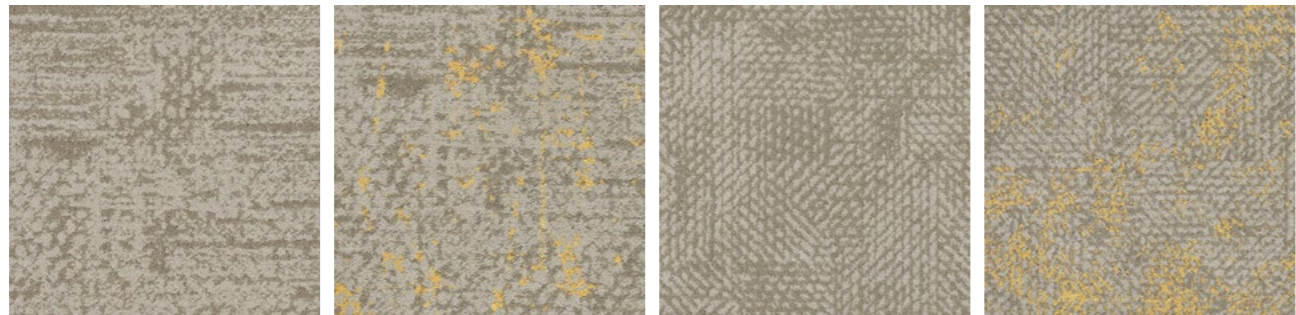


87302A

87302B

87302C

87302D

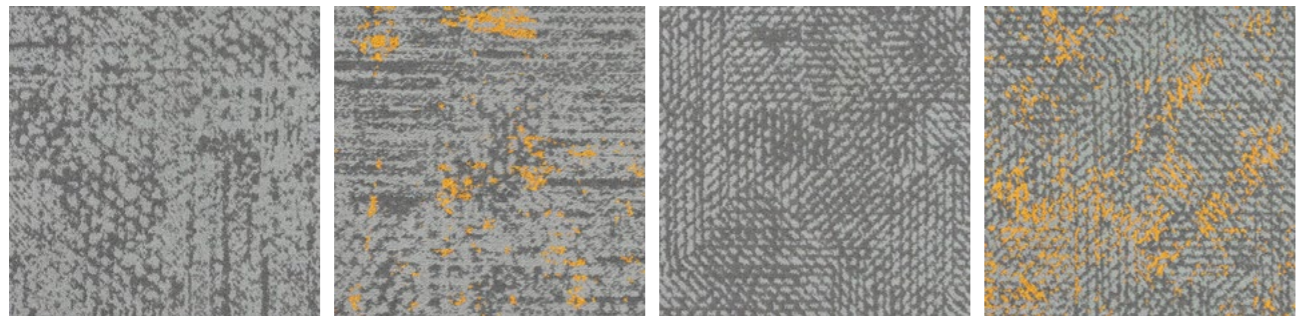


87303A

87303B

87303C

87303D

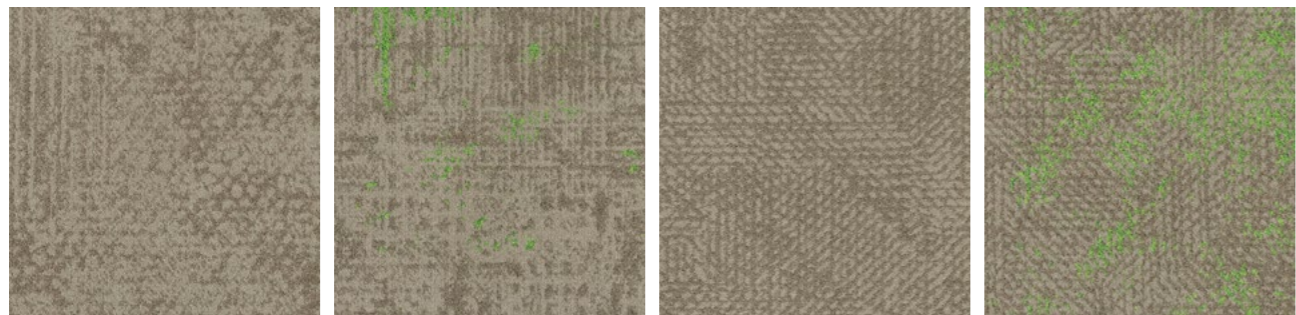


87304A

87304B

87304C

87304D



87305A

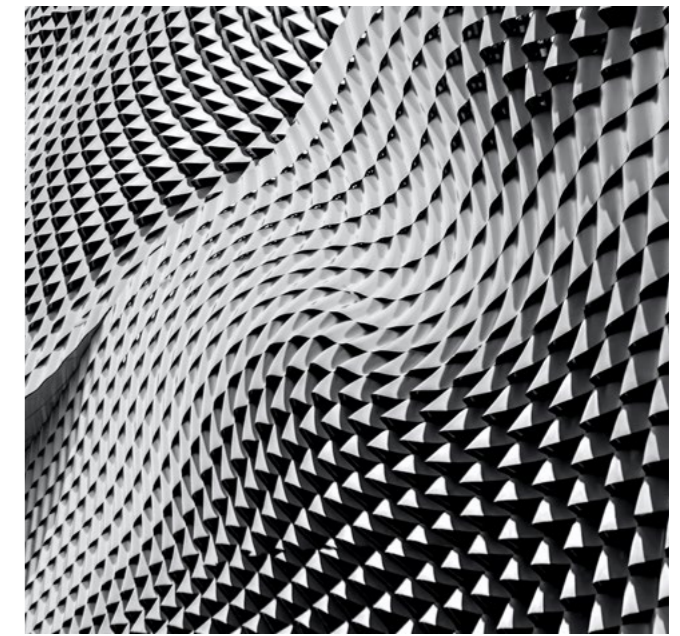
87305B

87305C

87305D

TEXTURE

Product Name : Texture 87300A/B/C/D
Construction : Multi-Level loop
Material : 100% Nylon 6
Color System : 100% Solution Dyed
Machine Gauge : 1 / 10 "
Pile Height : 4.5 - 6.0 mm
Tile Size : 50 x 50 cm
Soil/Stain Protection : RSG Protection
Backing Structure : PVC with fiberglass



Generic Tests

Dynamic Loading
 Pass ISO 2094
 Pass AS/NZS 2111.2

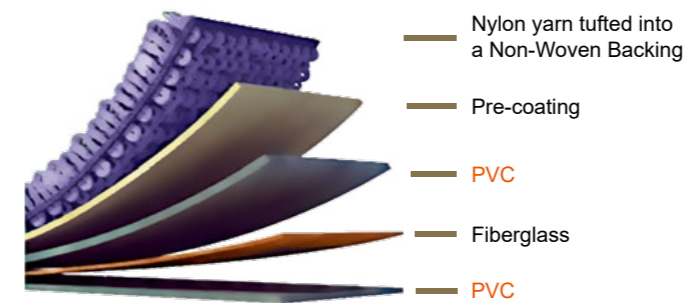
Static Loading
 Pass ISO 015/3415
 Pass AS/NZS 2111.13

Thermal Resistance
 Pass ASTM C518 R

Green Carpet (VOC)
 Pass ISO 10580
 Pass ASTM D7706-11

Green Carpet (Formaldehyde)
 Pass NIOSH Method 2016

Static Generation
 Pass AATCC 134



Performance Specifications

Stability - Delaminating
 Pass ISO 2551
 Pass AS/NZS 2111.16
 Pass ASTM D3936

Stability - Dimensional
 Pass ISO 2551
 Pass ISO/PAS 17984

Stability - Tuft Bind
 Pass ASTM D1335
 Pass ISO 4919
 Pass AS/NZS 2111.15

Flammability - Methanamine Pill
 Pass BS 6307
 Pass ISO 6925

Flammability - Radiant Panel
 Pass ISO 9239-1
 Pass ASTM E648

Flammability - Smoke Density
 Pass ISO 9239-1
 Pass ASTM E662

Antistatic
 Pass BS ISO 6356
 Pass AATCC 134

Colour Fastness - Light
 Pass AS 2001
 Pass ISO 105-B02
 Pass AATCC 16E

Colour Fastness - Rubbing and Crocking
 Pass ISO 105-X12
 Pass AS/NZS 2111.19.1
 Pass AATCC 165

Colour Fastness - Water
 Pass AS 2001.4.21
 Pass ISO 105-E01
 Pass AATCC 107

Wear - Castor Chair
 Pass BS-EN 985
 Pass ISO 4918

Wear - Vetterman Drum
 Pass BS ISO 10361

Sound Absorption
 Pass ISO 354

Impact Sound
 Pass ISO 10140-3

Antimicrobial Treatment
 Pass ASTM E2471
 Pass AATCC 174
 Pass AATCC 171

