

Pane

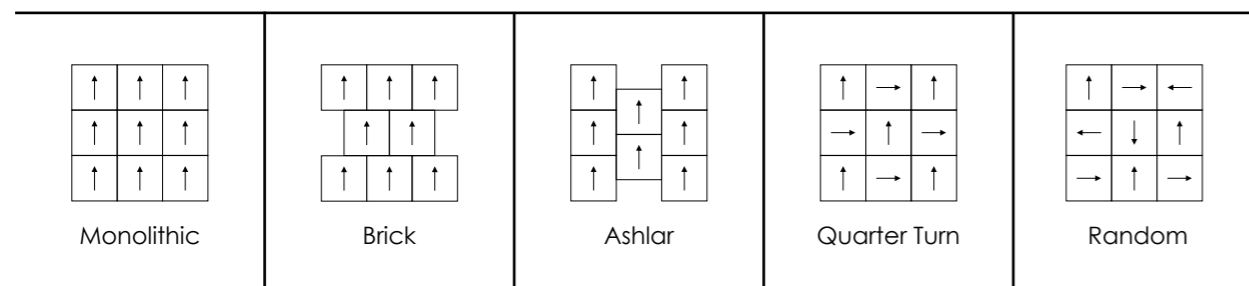
specifications

Product Name	: F901 Pane
Construction	: Multi-level Loop
Material	: 100% Nylon 6
Color System	: 100% Solution Dyed
Machine Gauge	: 1 / 12 "
Pile Weight	: 550 g/m ²
Pile Height	: 3.0/4.0/5.5 mm
Tile Size	: 50 x 50 cm
Backing Structure	: PVC with fiberglass



Volatile Organic Compound (voc)	: Pass ASTM D7706-11
Semi Volatile Organic Compound (svoc)	: Pass ASTM D7706-11
Formaldehyde Emission	: Pass NIOSH method 2016
Flammability	: Pass GB 8624-2012
	: Pass GB/T 14768-93
Smoke Density	: Pass ASTM-E-662 ≤ 450 DMC
	: Pass GB/T 8624-2012
Static Generation	: Pass AATCC-134
	: Pass GB/T 18044-2000
Antimicrobial	: Pass AATCC TM 174
Color Fastness To Light	: Pass AATCC-16E
	: Pass Grade 4/5 ISO 105-X12
Color Fastness To Water	: Pass AATCC-16E
	: Pass Grade 5 ISO-B02:1994E
Color Fastness To Crocking	: Pass AATCC-165
Tensile Strength Test	: Pass ISO13934-1
	: Warp 3112.9

- This carpet is manufactured and sold for floorcovering use only.
- As with all carpets, colors are subject to dye lot variations.
- Specifications are subject to nominal manufacturing variances Material supply and/or manufacturing processes may necessitate specification changes without notice.



Pane F901

FEHRER

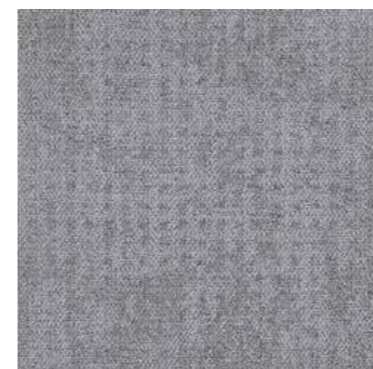


Pane widen your horzion.



F90101+02+03

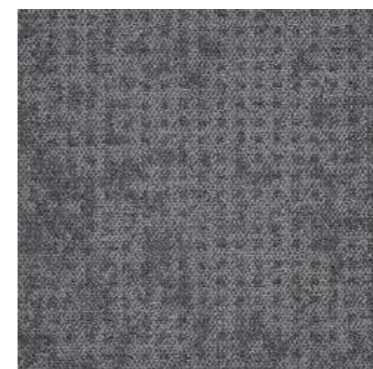
PANE F901 / FEHRER



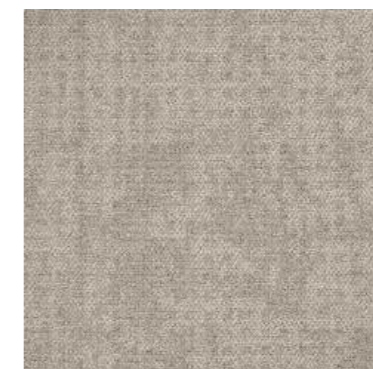
F90101



F90107



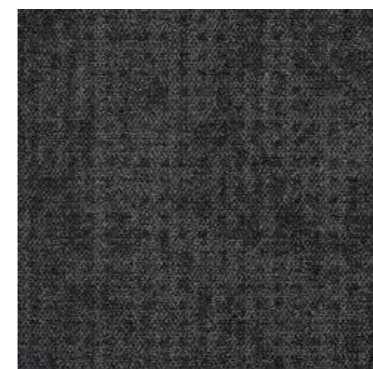
F90102



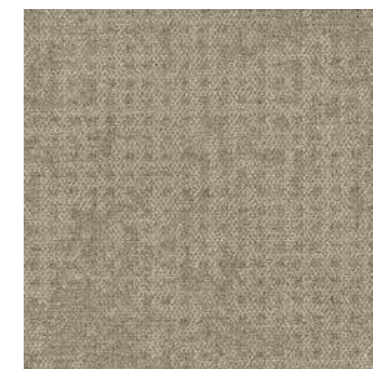
F90105



F90108



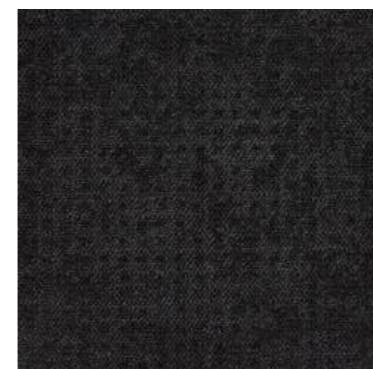
F90103



F90106



F90109



F90104



F90110



F90105+06+08

PANE F901 / FEHRER



F90101+02+07+09



F90105+06+10

You deserve a better and more comfortable life.

